

Y-CIRC
S E R I E S



Y-CIRC M12
SCREW-, BAYONET- AND
PUSH-PULL
LOCKING MECHANISMS

THE LOCKING EXPERT

Y-CIRC M12 WITH SCREW, BAYONET, AND PUSH-PULL LOCKING MECHANISMS

Three Powerful Locking Solutions for M12 Connectors

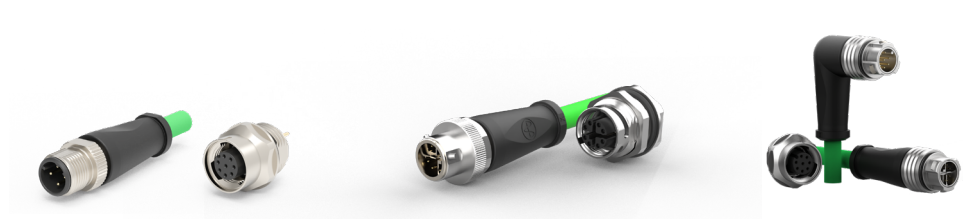
Discover our three innovative mechanical variants for M12 locking – each engineered for maximum reliability, ease of use, and performance.

Your Advantage: Flexibility Without Compromise

No single system replaces the others. Instead, they complement each other to deliver the perfect fit for your application. Whether you need quick installation, robust vibration resistance, or tool-free handling, we have the right solution for you.

Compare. Choose. Succeed.

Our comparison table gives you a clear overview of key differences, so you can make a confident, well-informed decision and optimize your connectivity.



	Screw	Bayonet	Push-Pull
Norm	IEC 61076-2-101	IEC 61076-2-011	IEC 61076-2-012
Additional Qualification	No	No	Yes (Additional testing for locking mechanism)
System Compatibility	Basis standard	Backward compatible to screw type versions	Backward compatible to screw type versions
Installation Time	Slow (manual screwing)	Medium (plug + ¼ turn)	Fast (only plug-in)
IP-Ensurance	Requires torque tool	By locking + turning	By locking
Space Efficiency	Low (needs wrench access)	Medium (manual access required)	High (plug directly)
Mechanical Robustness	Standard	Standard	High (additional mechanical tests)
Effort for direct integration in customer device	Low (only screw contour needs to be integrated)	High (screw and complex Bayonet contour need to be integrated)	Middle (screw and push-pull contour need to be integrated)

