



ENGINEERED TO CONNECT





## 65 YEARS OF HIGH TECH

In 1956, YAMAICHI ELECTRONICS started as first company in the world the production of transistor and vacuum tube sockets. These sockets made it possible to replace tubes and transistors quickly and without soldering for the first time.

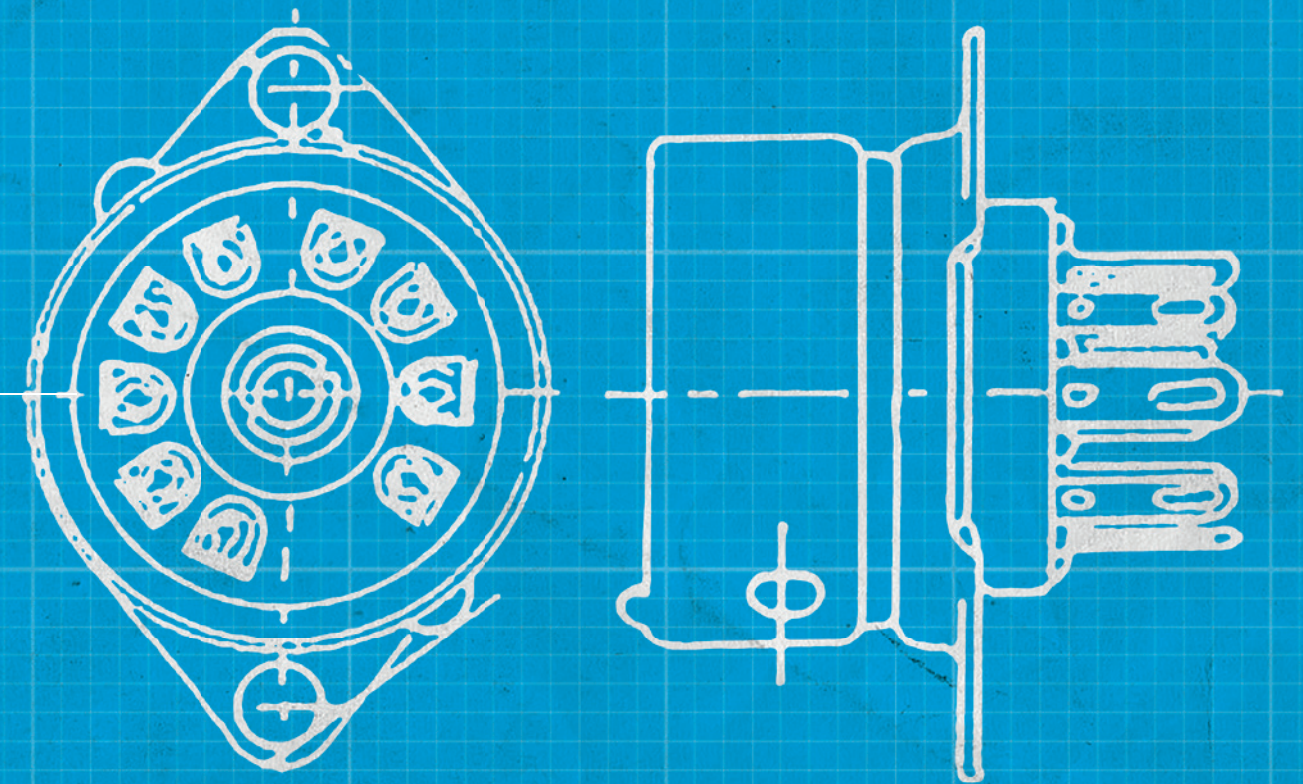
This made the repairs of electrical appliances such as radios, televisions or guitar amplifiers much cheaper. The impact of the falling repair and maintenance costs on the sales of electrical appliances and ultimately on the „economic miracle“ in the 50s and 60s cannot be underestimated.



May 23. 1956  
TOKYO - JAPAN

YAMAICHI ELECTRONICS MFG. CO., LTD.  
VACUUM TUBE SOCKET

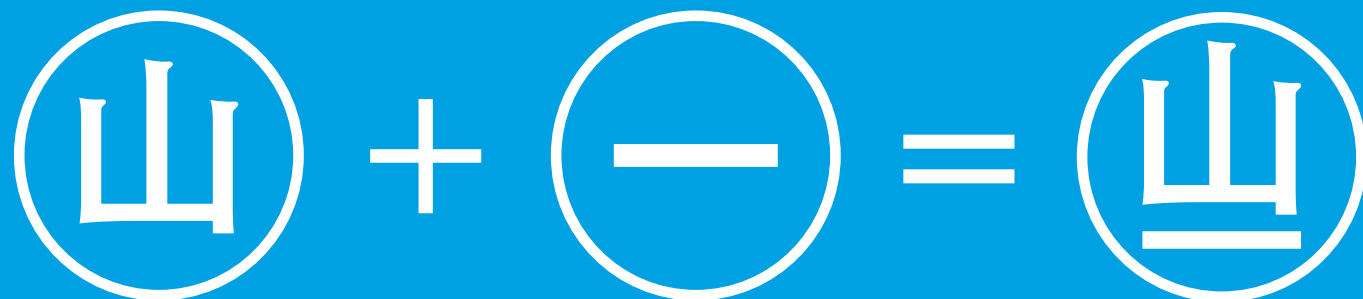
PATENT  
NO. 7.001.230



真空管用ソケットの図面



# YAMAICHI



**YAMA**  
means **MOUNTAIN**

**ICHI**  
Stands for **ONE**

**YAMAICHI**  
means, therefore, **MOUNTAIN ONE**  
or **MOUNTAIN PEAK**.



Japanese Logo - 1956



European Logo - 1993

Hello and welcome to YAMAICHI ELECTRONICS.

When we founded the Connector Service GmbH in Munich in 1986, we could not foresee that only 5 years later we would become part of the YAMAICHI ELECTRONICS Co., Ltd., in Tokyo.

In 1993, we renamed the company to YAMAICHI ELECTRONICS Deutschland GmbH, the European headquarters.

The relationship between Tokyo and Munich is as it should be between mother and adult daughter. Each acts independently and makes its own decisions, but they are in close contact and value each other's opinion.

Today, YAMAICHI ELECTRONICS Deutschland GmbH has over 300 employees, sales offices in England, Italy and Israel, a production facility in Frankfurt (Oder) and a design centre in Tunisia.

This success story, which is far from over, is made possible only with the best employees, they are the backbone of our success.

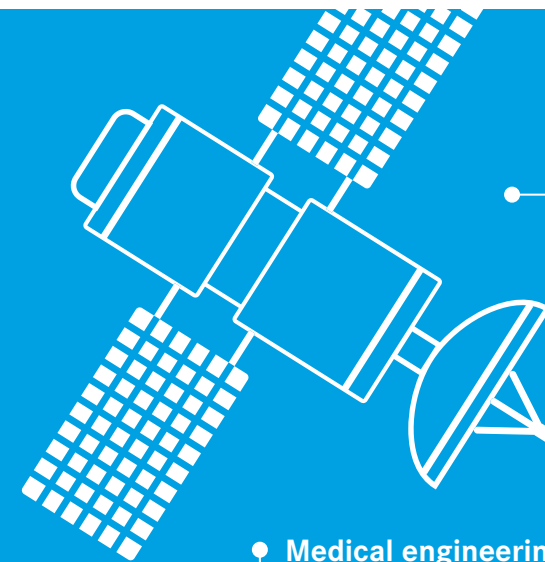


A stylized signature of Helge Puhlmann.

Helge Puhlmann  
European President

# HERE WE ARE!

Even if you do not see us – we are there. In the industry, in medical technology, in high-speed networks, smartphones, in space travel or in the automotive sector – YAMAICHI ELECTRONICS connects and tests based on the state-of-the-art technologies.

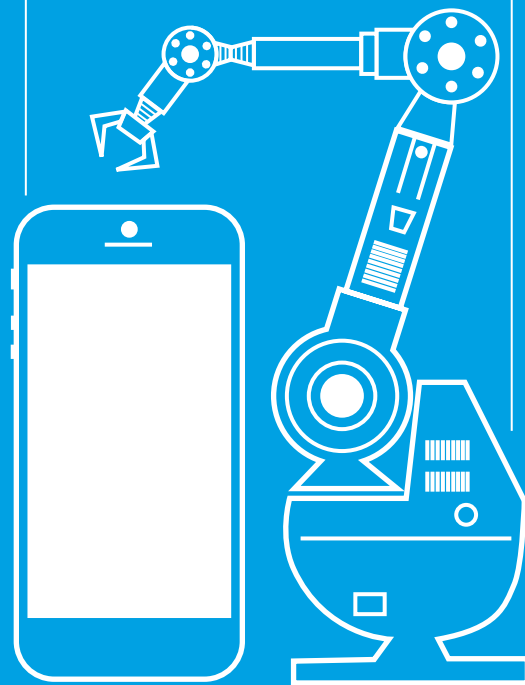


## IC's in satellites

tested with test sockets  
& PCB solutions from  
YAMAICHI ELECTRONICS

## Smartphones

Processors & Power Management  
tested with test sockets from  
YAMAICHI ELECTRONICS



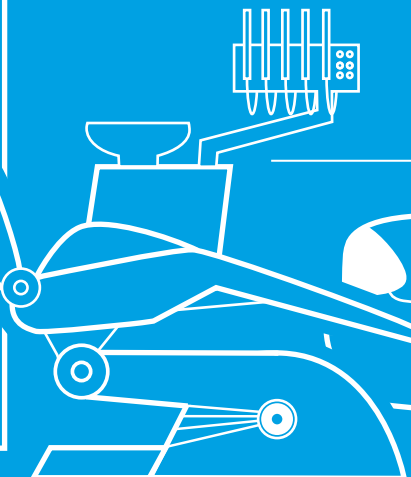
## Factory automation & industrial robots

Connected by Y-Con and  
Y-Circ M plugs from  
YAMAICHI ELECTRONICS



## Server farms

Connected by CFP, QSFP,  
SFP connector systems from  
YAMAICHI ELECTRONICS

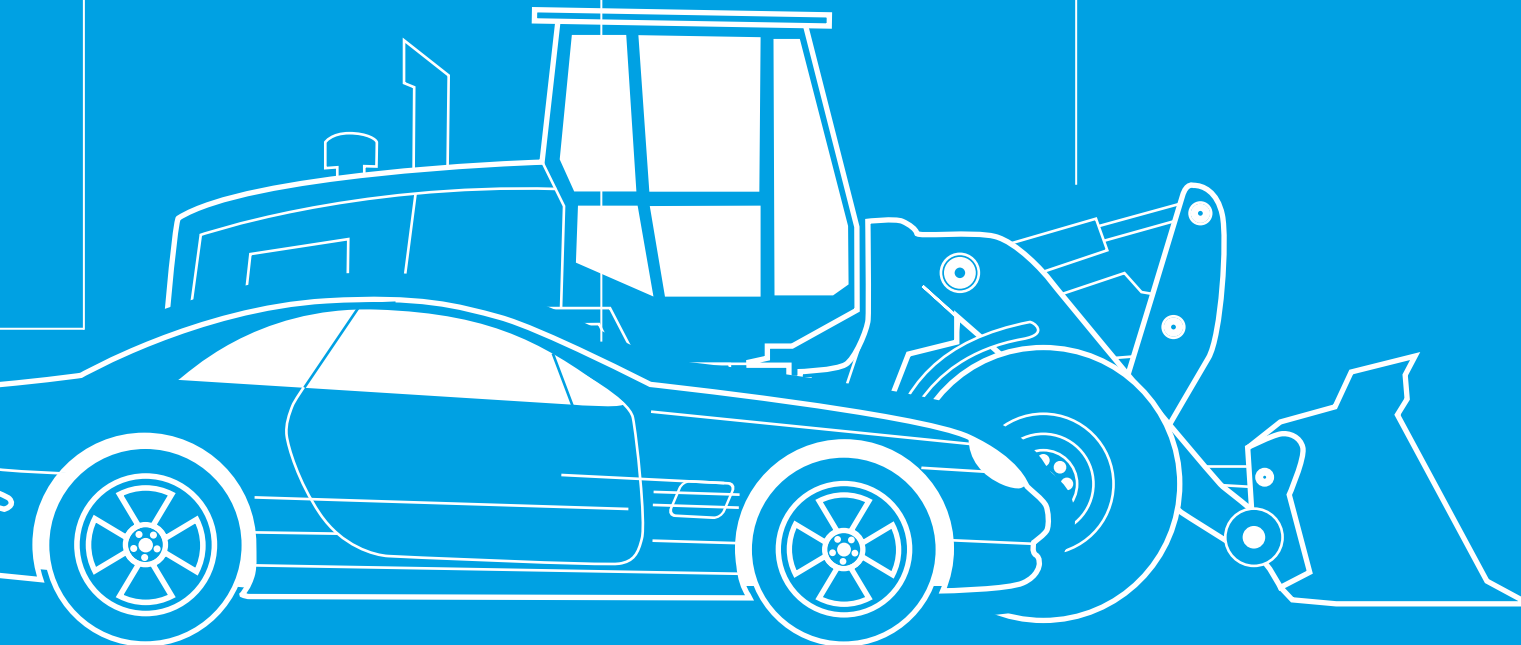


## Medical engineering

Connected by Y-Circ P connectors  
and cable assemblies from  
YAMAICHI ELECTRONICS

## Car infotainment systems

Connected by Y-Lock, Y-Quad, BEC  
and card connectors and tested  
with module test adapters from  
YAMAICHI ELECTRONICS

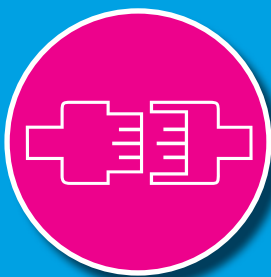


## Construction machinery

Connected by Y-Con connectors  
from YAMAICHI ELECTRONICS



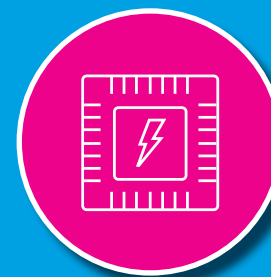
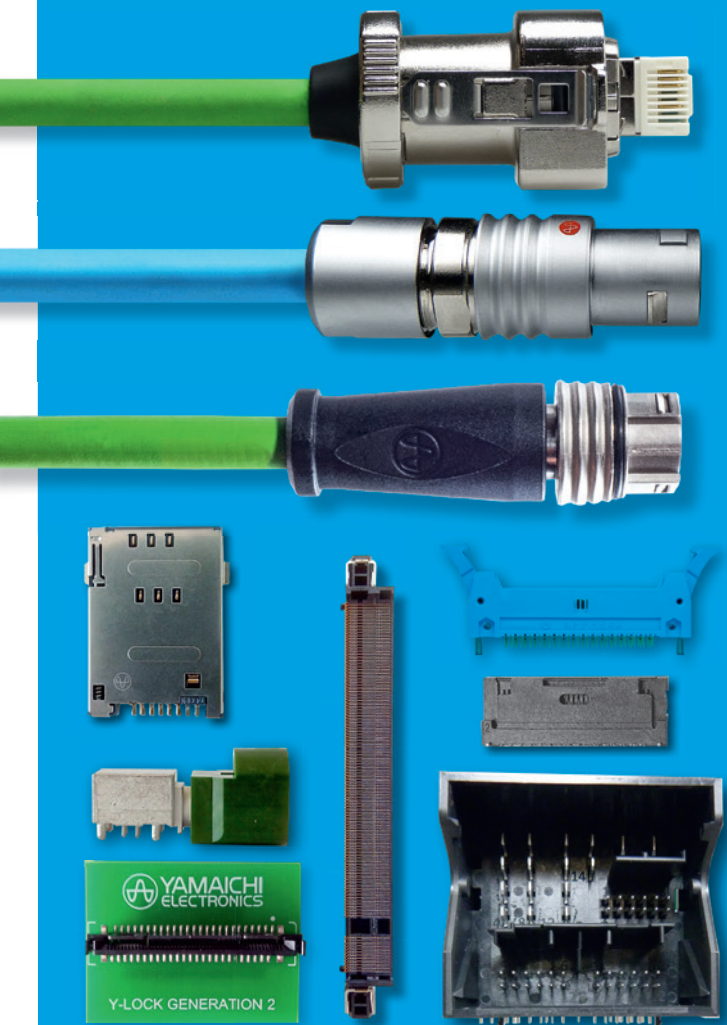
# WHAT'S BEHIND IT



## CONNECTOR SOLUTIONS

In the age of the highly technological information society, connectors play an increasingly important role. Whereas in the early days of signal transmission, it simply was a question of connecting the copper cables or coupling them to a transmitter and receiver device. Today, the development of the connectors has a decisive influence on the development of the devices.

Given the importance of data transfer rates, the importance of connectors will continue to increase. The employees of YAMAICHI ELECTRONICS are constantly developing new technologies and secure our technological lead with numerous patents.

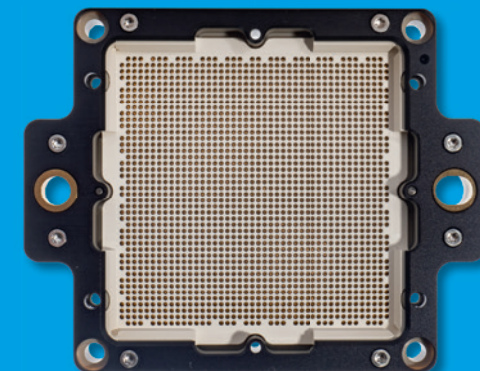
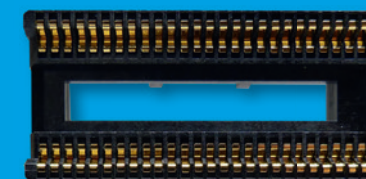
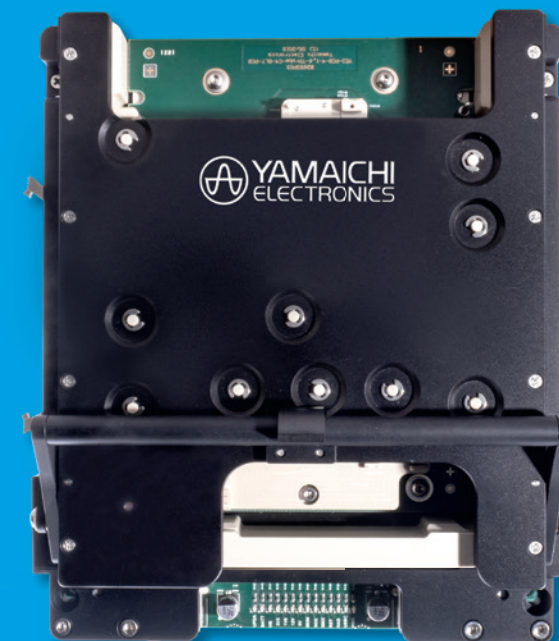


## TEST SOLUTIONS

From washing machines to smartphones, from electric toothbrush to car infotainment system, today there are semiconductor components everywhere that make our lives easier – if they function properly!

To guarantee this, YAMAICHI ELECTRONICS was the first company worldwide to develop customised test solutions. This innovative far-sighted thinking provided us with the know-how that has made us the global market leader in the field of test solutions.

YAMAICHI ELECTRONICS' portfolio of test solutions ranges from the pure contacting of semiconductor devices and their diverse package types to complex and highly integrated test systems for manual and automated testing.





# WE MANUFACTURE HERE

## Progressive by tradition!

In 2006 we founded the YAMAICHI ELECTRONICS Manufacturing Germany GmbH in Frankfurt (Oder).

On an area of 7,000 m<sup>2</sup> more than 110 employees at state-of-the-art machinery manufacture our high-quality products. So with know-how and technology, the innovative ideas from our design centres are set into practice.

## FRANKFURT (ODER) SMALL CITY – GREAT POTENTIAL

The decisive factor for the location was the infrastructure that had grown over decades. Since 1959 Frankfurt (Oder) has been the centre of the East German semiconductor industry and an important location for science and research. This is also evidenced by the work of the world-renowned Institute for Semiconductor Physics (IHP), which is based in the Technology Park East Brandenburg.





A woman with long dark hair, wearing a white lab coat, is smiling and standing in a laboratory. To her left is a large piece of scientific equipment, possibly a scanning electron microscope. To her right are two computer monitors displaying technical data and images. The background shows laboratory shelves and equipment.

WHY YAMAICHI?

# ANUJA MAHALE

## DEVELOPMENT ENGINEER

### Focus on lightweight!

After successfully completing her bachelor's degree in Mechanical Engineering at the University of Pune in India, Anuja moved to Germany. In Augsburg she completed her education with a Master's degree in Lightweight Construction and Composite Technology.

With this qualification and the four languages that Anuja speaks fluently (Marathi, Hindi, English and German), she was a perfect fit for the position of development engineer, which she has held with us since 2017. With her in-depth specialist knowledge and heartfelt nature, Anuja continues to generate new impulses in the development team.

### THE INTER- CULTURAL TEAM IS VERY INSPIRING

#### Why Yamaichi?

**Anuja:** „My intercultural team is very inspiring because I really enjoy travelling and find other cultures very exciting. Here, in my team alone, people from three continents come together. Then there are the technical challenges that have to be mastered on a daily basis and which enable me to grow further.“



# WHO FITS OUR TEAM

## Everyone has talents and skills!

At YAMAICHI ELECTRONICS you can discover, unfold, use and expand your talents and skills.

The employees are heart and soul of our company, they are the guarantors of success. This statement is more than just lip service, it is a lived philosophy – this is proven by our low staff fluctuation and continued growth.

PEOPLE WHO  
ENJOY THEIR  
PROFESSION  
AND KNOW  
WHAT THEY  
WANT

To keep it that way, we are looking for people who identify with our philosophy and enjoy doing their best. Whether as a trainee, student, career starter, professional or experienced manager, everyone is important and contributes their talents and abilities.





A man with short brown hair and a light beard, wearing a white button-down shirt and blue jeans, is sitting at his desk in an office. He is looking towards the camera with a slight smile. His desk has two Dell monitors. The left monitor shows a Windows desktop with a blue background. The right monitor displays a 3D model of a blue electronic component with the text 'YAMAICHI ELECTRONICS', 'VED274051051-1-25', and 'XX-XXX-12373401-Rev0'. A black keyboard and a black mouse are on the desk. In the background, there is a large green plant, a blue bulletin board with a calendar for 2018, and office cabinets. The overall lighting is bright and professional.

WHY YAMAICHI?

# MATTHIAS LOICHINGER

IT SYSTEMADMINISTRATOR

## Technically talented!

Matthias completed his education as a Technical Product Designer with an outstanding result. He won the state award and secured himself a place among the best apprentices in Upper Bavaria. That he decided to take up a permanent position at YAMAICHI ELECTRONICS, makes us proud. After several years in product design Matthias has reoriented himself and now supports our IT – and also there he has become indispensable.

HERE YOU CAN  
COMBINE  
PROFESSIONAL  
SUCCESS AND  
FAMILY TIME

## Why Yamaichi?

**Matthias:** „The decisive factor was the interesting range of tasks. Here I have the opportunity to develop further in an interdisciplinary manner. In addition, YAMAICHI ELECTRONICS combines professional success and time for the family. The flexible working hours allow me to see my two sons grow up and that is extremely important to me.“



# WHAT WE OFFER

## What is doubles when you share it?

Knowledge, joy and experience of course!

YAMAICHI ELECTRONICS not only offers beautiful premises, but also room for new ideas, innovative solutions and personal development. Here you will find everything you expect from a modern employer.

## A SAFE WORK-PLACE IN AN INTERNATIONAL ENVIRONMENT

In addition to „kununu“ and „GREAT PLACE TO WORK“, we have also been awarded by the IHK. We are very proud, because they credibly attest to our fair and respectful interaction with each other and a strong cohesion within the company.



These are our ingredients for satisfied employees:

- 30 days holiday
- Individual and flexible working time models
- Kindergarten allowance
- Canteen allowance
- Job ticket
- Capital-forming benefits
- Free drinks and fruit basket
- Company events
- Table football
- Company bicycle
- Massage





## WHY YAMAICHI?

# FIRUZE FILIZCI

## BUYER

### Shopping in a big way!

In 2014, Firuze began her education as a commercial specialist in wholesale and foreign trade. As part of this, Firuze took advantage of the trainee exchange program and spent 4 weeks at our Italian site in Agrate Brianza. There she supported the sales department, explored the region around Milan in her spare time and got to know the Italian way of life. Since successfully completing her education, Firuze has been an integral part of our purchasing team.

## HERE I CAN USE MY SKILLS TO THE BEST

### Why Yamaichi?

**Firuze:** „There are many reasons. The working atmosphere is very pleasant. There is a natural team spirit. But even more important for me is the variety offered by YAMAICHI ELECTRONICS. Here I can use and develop my skills and the knowledge I have acquired during my education.“





# HOW WE TRAIN



## Youth is our future!

YAMAICHI ELECTRONICS trains to take over.

Well-trained professionals are the most important asset in a high-tech company. That is why we focus on excellent training of young talents.

Our aim is to make the „apprenticeship years“ a positive experience. In addition to providing a broad range of technical knowledge, we place a lot of emphasis on strong team spirit. Qualifications such as teamwork, independence and respectful interaction with each other are taught in the training as well as specific content.

After passing their exams, we offer our apprentices and students from the Verbund/work-study programme the chance of an exciting professional future.

We offer our trainees and students the following benefits:

- We train to take over
- Strong team spirit: regular meetings & events
- Exchange programme with apprentices from other locations
- Flexible working hours
- Job ticket (fully paid)
- At least 24 days holiday

At our location in Munich we train:

- **Specialist in Wholesale and Foreign Trade**
- **Specialist in Office Management**
- **Technical Product Designer**
- **Specialist in Marketing Communication**
- **Warehouse Logistics Specialist**
- **IT system administrator**

Dual study programme:

- **Mechanical Engineering B.Sc.**
- **Industrial Engineering B.Eng.**
- **Business Administration B.A.**

## REALLY GOOD

At our location in Frankfurt (Oder) we train:

- **Industrial Mechanic – focus CNC milling and turning**
- **Mechatronics Technician**
- **Process Mechanic for Plastics and Rubber Technology**

Dual study programme:

- **Industrial Mechanic and Mechanical Engineering B.Sc.**

Information on education and study programme at:  
[www.yamaichi.de/career](http://www.yamaichi.de/career)



### Voice of the tech-trainees!

In 2007, Siegfried decided to change his career and found a new home with us. In Test Engineering, Siegfried is the man for PCB design and the contact person for our trainees in technical product design. As an honorary IHK examiner, he knows the worries and needs of trainees as well as those of instructors and examiners.

## MY LIFE AND PROFESSIONAL EXPERIENCE IS APPRECIATED HERE

For the passionate hockey referee, fairness and respect are not only crucial on the field, but also distinguish him on his job.

### Why Yamaichi?

**Siegfried:** „First and foremost it is the interaction with experienced employees. Every day I experience that my life and professional experience is appreciated, both in the technical area and in dealing with the trainees.“

WHY YAMAICHI?

# SIEGFRIED BARTENSCHLAGER

TEST ENGINEER





# HOW WE SUPPORT



**In the best hands from the start!**  
With our HR Team.

From the first working day, new colleagues are familiarised with the work processes. You get plenty of time to settle in and get to know all colleagues personally. In the internal trainings, you learn everything about the products and the company.

At the latest after the first company run, the Oktoberfest or the Christmas party it is clear that you can not only work well with your colleagues.

---

**FOR US,  
EMPLOYEES ARE  
NOT A RESOURCE –  
THEY ARE PEOPLE.**

---

You can find our open positions our website at:  
**[www.yamaichi.de/career](http://www.yamaichi.de/career)**

We look forward to hearing from you and receiving your application. Take the step now towards a successful future together!

Your YAMAICHI ELECTRONICS team







[work@yamaichi.de](mailto:work@yamaichi.de)

[www.yamaichi.de](http://www.yamaichi.de)

Tel. +49 (0)89 -45 109 -0

**YAMAICHI ELECTRONICS**

Deutschland GmbH

Bahnhofstraße 20

85609 Aschheim-Dornach



YAMAICHI  
ELECTRONICS



follow us on  
*Instagram*