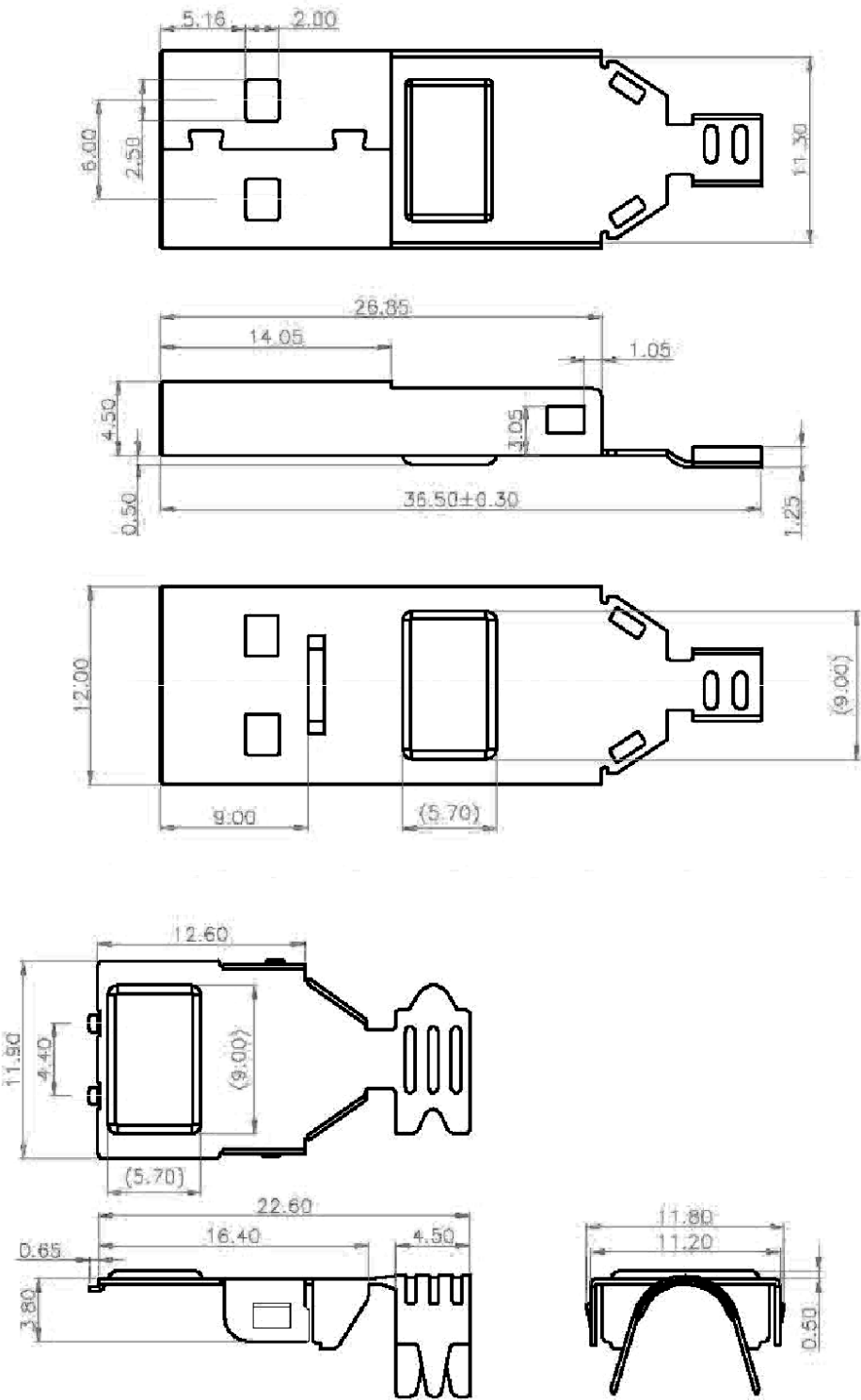


THE INFORMATION CONTAINED IN THIS DRAWING IS THE SOLE PROPERTY OF YAMAICHI ELECTRONICS DEUTSCHLAND GmbH. ANY REPRODUCTION IN PART OR WHOLE WITHOUT THE WRITTEN PERMISSION OF YAMAICHI ELECTRONICS DEUTSCHLAND GmbH IS PROHIBITED.

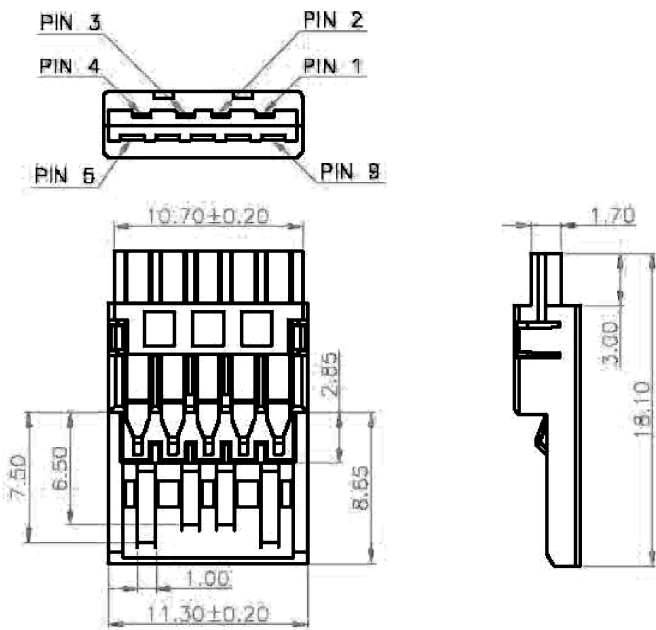
CONFIDENTIAL

Customer approved



FRONT SHELL  
BACK SHELL

CONNECTOR



NOTES:






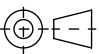
- Electrical**
- 1.Contact Resistance: 30 mΩ Max
  - 2.Current Rating: 1.5 AMP
  - 3.Dielectric Withstanding Voltage: 500VR.M.S
  - 4.Insulation Resistance: 1000 MΩ min.

- Mechanical characteristics**
- 1.Mating forces:3.57 Kg Max.
  - 2.Unmated force: 1.02Kg Min
  - 3.Durability: 1500 cycles
  - 4.Cable OD size: 6.0mm
  - 5.Operation temperature: -20°C~85°C

**NOTE:**  
BLUE INSULATOR, SHELL NICKEL PLATED  
CONTACT: SELECTIVE 15u" GOLD PLATED

Yamaichi acts with all markings of the product exclusively on behalf of the customer as service provider and not as distributor. Yamaichi is not aware of the customer's end use/application. The customer indemnifies Yamaichi from any liability towards third parties in connection with the marking - with the exception of the legal exclusions of liability according to § 309 No. 7 BGB. Specification/Drawing subject to alteration without prior notice

RoHS compliant acc. to directive 2011/65/EU

Unless otherwise specified : Dimensions are in millimeters  TOLERANCES		REV.	REVISION DESCRIPTION		INITIALS	REV. DATE	<div>YAMAICHI ELECTRONICS</div>		
									
									
									
									
<b>Order / Article No.</b> 24-02543		003	redrawn		T011	15.10.2019			
		DO NOT SCALE DRAWING				CLASSIFICATION:		USB-3.0, Male A type Solder type	
NOTES: A3			NAME	DATE					
	ANGLE PROJECTION:	CREATED	MEZ	16.01.2013	TITLE:				
	 THIRD	MODIFIED	T098	17.10.2019	USB-3.0-9A-P-BL-BU-NEW				
		RELEASED	T011	17.10.2019	DWG NO.:				
					Customer-P(028)A123				
					REVISION:		003		
WEIGHT: 0.70		SUBREV	02	T022	03.03.2020	SCALE: 2:1		SHEET 1 OF 1	A3 - ASSEMBLY