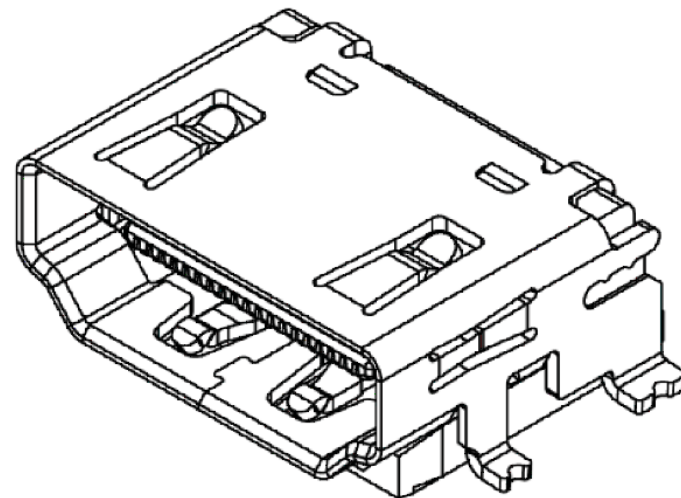
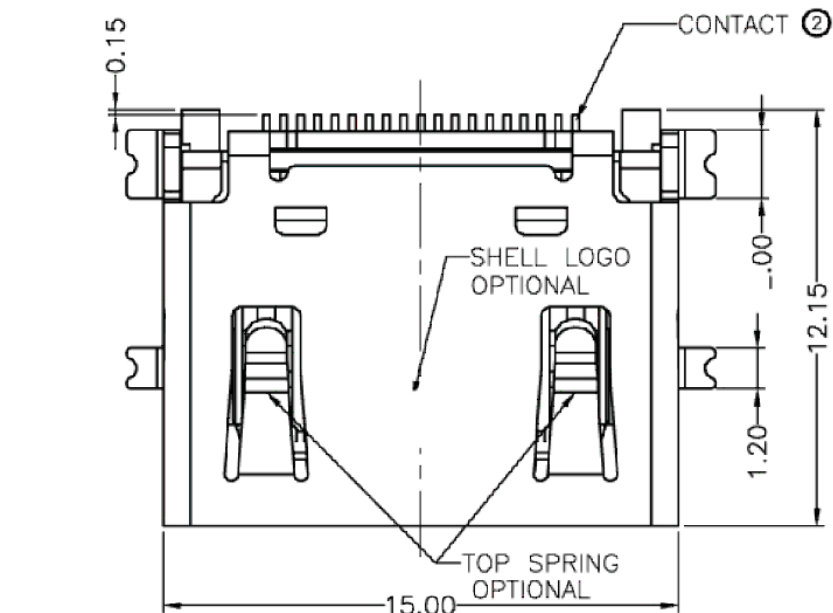
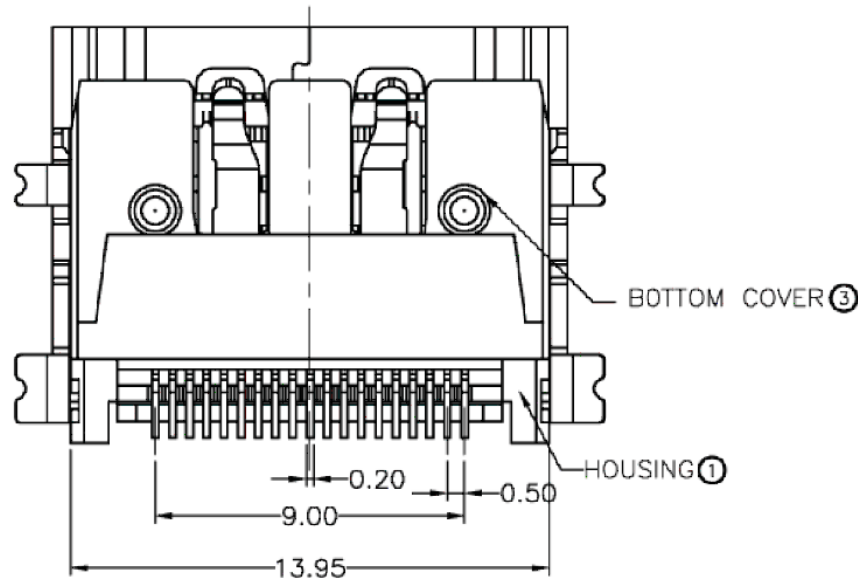
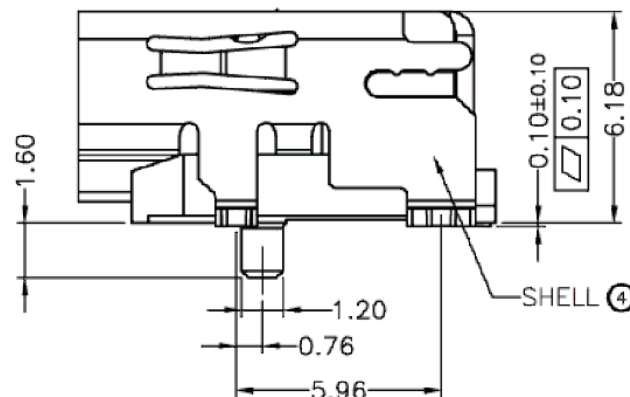
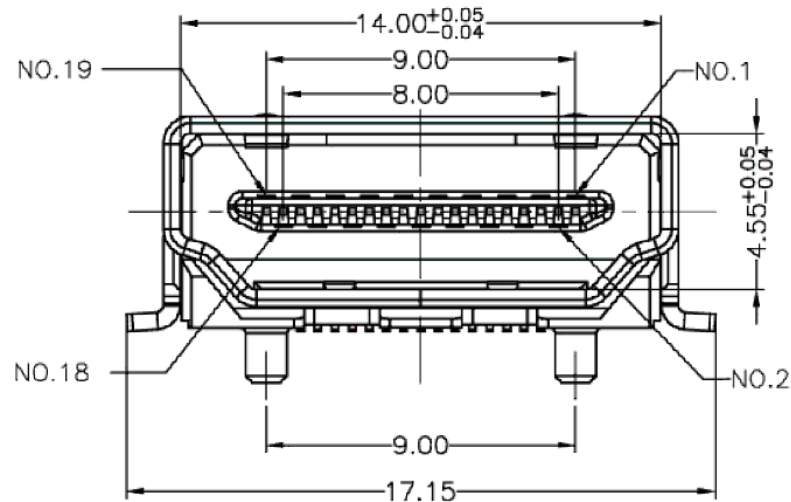


Customer approved



3D VIEW



Specifications:

Series number: HDMI A type series
Construction node: SMT type
Number of pin: 19 Positions
Contact & Connecting types: Socket
Color codes: Black
Contact platings: G/F on mating area, 80μ" Mat Tin Plated on solder area, Ni 50μ" min under plating overall
Shell Platings: Nickel plating
Environmental protection No.: Green product
Packaging: Tape reel packaging
Suffix No.: With Logo, and w/o top spring solder tail is SMT type
Serial No.: Shell material is Brass

Bill of material & Specifications:

ITEM	PART NAME	Q'TY	MATERIAL	FINISH
1	HOUSING	1 PCS	HIGH TEMPERATURE	BLACK
2	TERMINAL	1 SET	COPPER ALLOY	GOLD PLATING
3	BOTTOM COVER	1 PCS	HIGH TEMPERATURE	BLACK
4	SHELL	1 PCS	BRASS OR SPCC	PLATING Ni

100% Critical Dimensions to be inspected 100%.
Critical Dimensions.
<SPC> Critical Dimensions. To determine Cmk & Cpk.

UNLESS OTHERWISE SPECIFIED : DIMENSIONS ARE IN MILLIMETERS

TOLERANCES: 0.000 ± 0.10
0.00 ± 0.20
0.0 ± 0.30
0. ± 0.50

ORDER / ARTICLE NO. 24-03054

CONFIDENTIAL

Customer Drawing

RoHS compliant acc. to directive 2011/65/EU
The information contained in this drawing is the sole property of YAMAICHI ELECTRONICS DEUTSCHLAND GMBH. Any reproduction in part or whole without the written permission of YAMAICHI ELECTRONICS DEUTSCHLAND GMBH is prohibited.

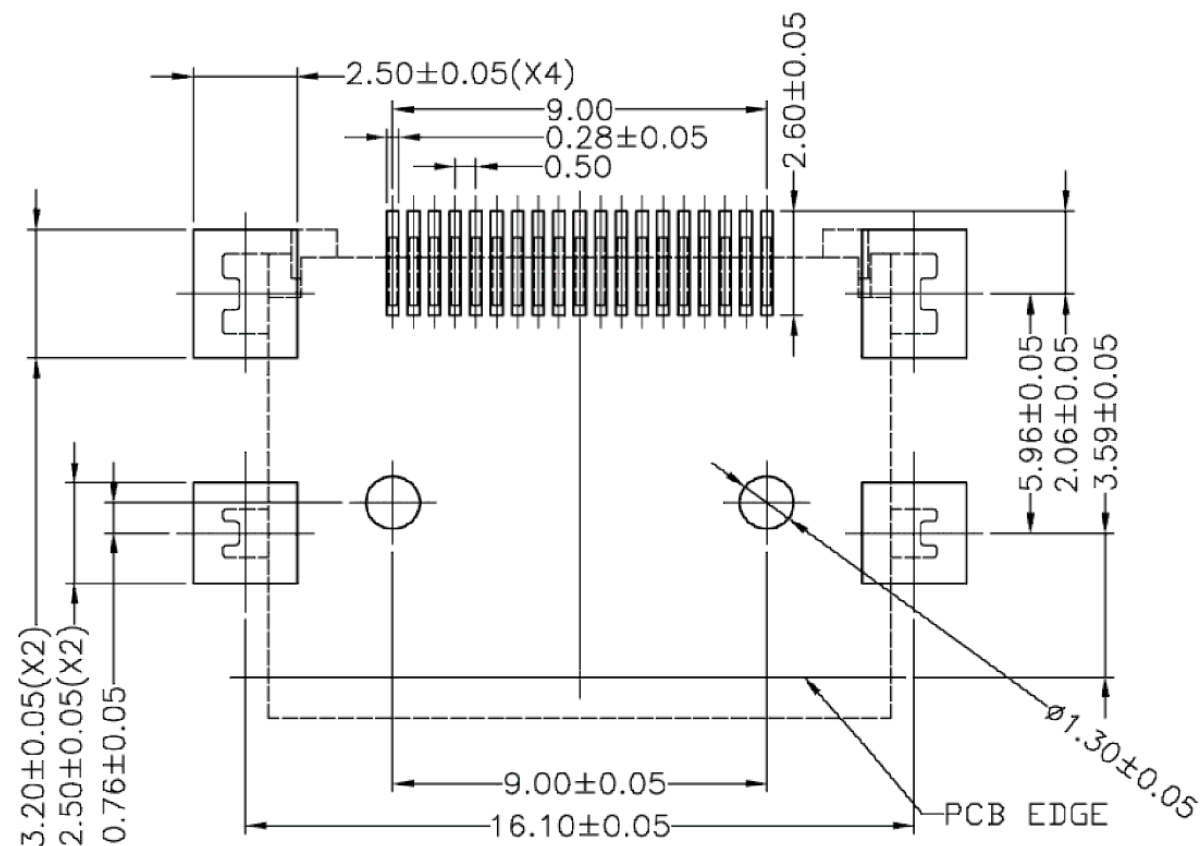
REVISION DESCRIPTION	ID	REV. DATE



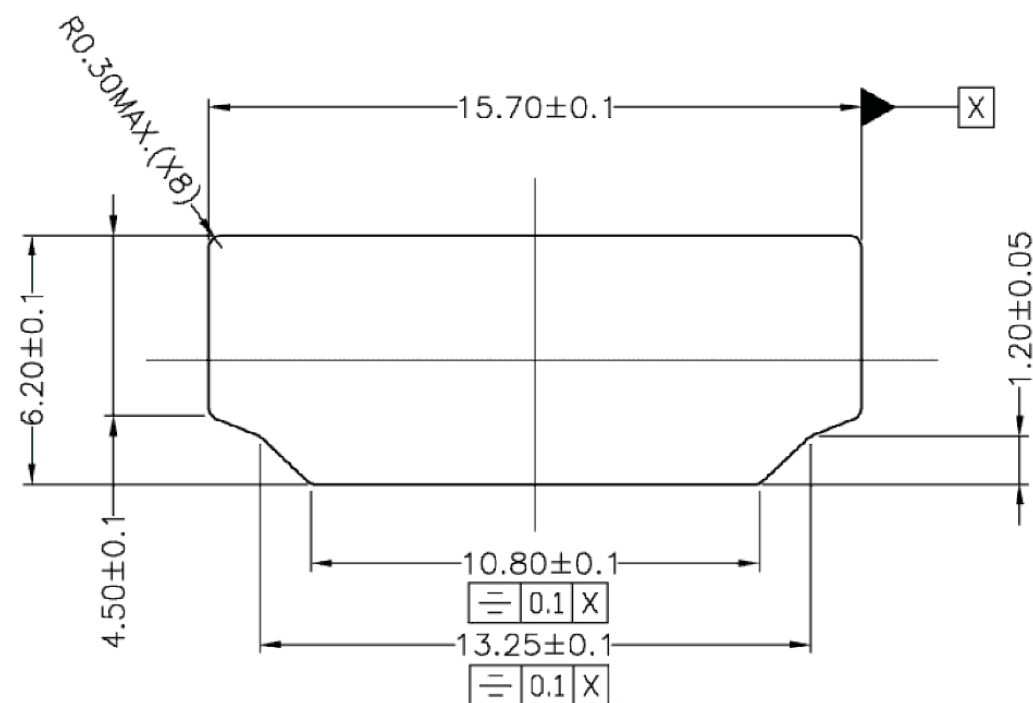
DO NOT SCALE DRAWING
Description: HDMI A Type SMT CONN
HDMI socket 90°, SMT Type3
Purchase No.:
HDMI-019-S9-BL-TYPE3
Drawing No.:
Customer-P(671)A19
REVISION: 0

WEIGHT: 0.49 SUBREV/04 T146 21.08.2024 SCALE: 5:1 SHEET 1 OF 2 DIN A3 - ASSEMBLY

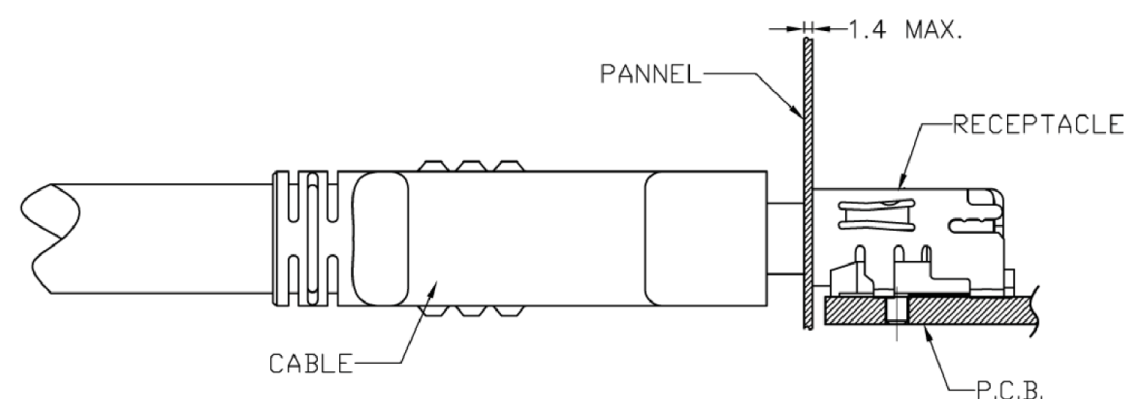
Yamaichi acts with all markings of the product exclusively on behalf of the customer as service provider and not as distributor. Yamaichi is not aware of the customer's end use/application. The customer indemnifies Yamaichi from any liability towards third parties in connection with the marking - with the exception of the legal exclusions of liability according to § 309 No. 7 BGB.



RECOMMENDED PCB LAYOUT (THICKNESS=1.6±0.15mm)



REFERENCE PANEL CUT OUT DIMENSION



REFERENCE MOUNT DIMENSION

SPECIFICATIONS:

MECHANICAL:

Withdrawal force after 2000 cycles: 9.8N Min, 39.2N Max.
Withdrawal force after 2001-10000 cycles: 4.9N Min, 39.2N Max
Insertion Force: 44.1N Max.

ELECTRICAL:

Contact current rating: 0.5A Min.
Voltage rating: 40V AC(RMS)
Withstanding voltage: 500 V AC between adjacent terminal(unmate)
300 V AC between adjacent terminal(mate)
Insulation resistance: 100 MΩ Min.(Unmated);
10 MΩ Min.(mated)
Contact resistance: 30mΩ Max.
Environmental:
Operating temperature: -25°C to +85°C
Storage temperature: -20°C to +60°C

100%	Critical Dimensions to be inspected 100%.
	Critical Dimensions.
<SPC>	Critical Dimensions. To determine Cmk & Cpk.

UNLESS OTHERWISE SPECIFIED :
DIMENSIONS ARE IN MILLIMETERS

TOLERANCES:	0.000	± 0.10
	0.00	± 0.20
	0.0	± 0.30
	0.	± 0.50
	ANGLE	±2°

ORDER / ARTICLE NO. 24-03054

CONFIDENTIAL

Customer Drawing

RoHS compliant acc. to directive 2011/65/EU
Specification/Drawing subject to alteration without prior notice.
The information contained in this drawing is the sole property of YAMAICHI ELECTRONICS DEUTSCHLAND GMBH.
Any reproduction in part or whole without the written permission of YAMAICHI ELECTRONICS DEUTSCHLAND GMBH is prohibited.

REVISION	DESCRIPTION	ID	REV. DATE



Description:	HDMI A Type SMT CONN HDMI socket 90°, SMT Type3
Purchase No.:	HDMI-019-S9-BL-TYPE3
Drawing No.:	Customer-P(671)A19
REVISION:	0

WEIGHT:	0.49	SUBREV/04	T146	21.08.2024	SCALE: 1:1	SHEET 2 OF 2	DIN A3 - ASSEMBLY
---------	------	-----------	------	------------	------------	--------------	-------------------

Yamaichi acts with all markings of the product exclusively on behalf of the customer as service provider and not as distributor.
Yamaichi is not aware of the customer's end use/application. The customer indemnifies Yamaichi from any liability towards third parties
in connection with the marking - with the exception of the legal exclusions of liability according to § 309 No. 7 BGB.