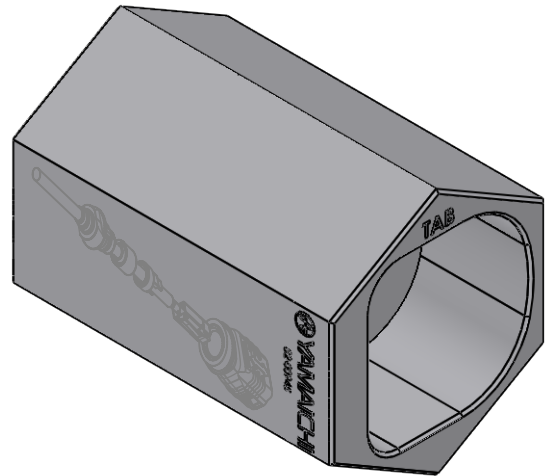
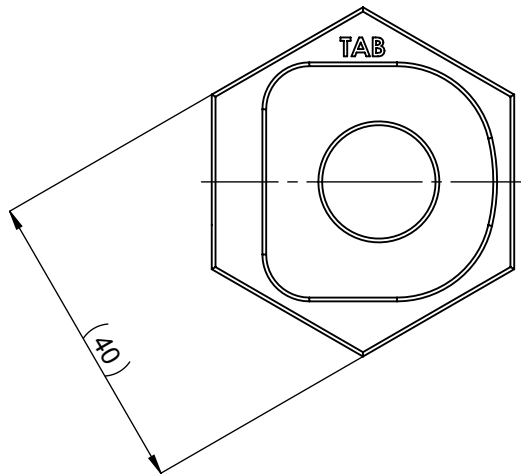


Material: Aluminum
Surface: Black anodized



Yamaichi acts with all markings of the product exclusively on behalf of the customer as service provider and not as distributor. Yamaichi is not aware of the customer's end use/application. The customer indemnifies Yamaichi from any liability towards third parties in connection with the marking - with the exception of the legal exclusions of liability according to § 309 No. 7 BGB.

- 100% Critical Dimensions to be inspected 100%.
- Critical Dimensions.
- <SPC> Critical Dimensions. To determine Cmk & Cpk.

CONFIDENTIAL

Customer Drawing

RoHS compliant acc. to directive 2011/65/EU

Specification/Drawing subject to alteration without prior notice.

The information contained in this drawing is the sole property of YAMAICHI ELECTRONICS DEUTSCHLAND GMBH. Any reproduction in part or whole without the written permission of YAMAICHI ELECTRONICS DEUTSCHLAND GMBH is prohibited.

UNLESS OTHERWISE SPECIFIED :
DIMENSIONS ARE IN MILLIMETERS

TOLERANCES:
ISO 2768-1 f
ISO 2768-2 H

REVISION	DESCRIPTION	ID	REV.	DATE



ORDER / ARTICLE NO. 82-00945

DO NOT SCALE DRAWING

Description: Hilfswerkzeug Y-ConCover-40-PP

Purchase No.:

Y-CONTOOL-40

Drawing No.:

Customer-P3021P111

REVISION:

001

WEIGHT: 163.91

SUBREV/01

SCALE: 1:1

SHEET 1 OF 1

DIN A4 - ASSEMBLY