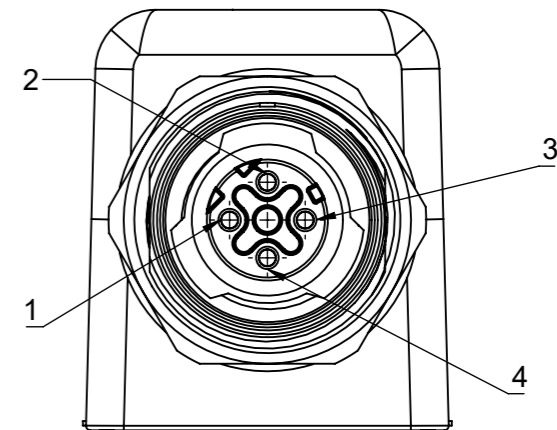
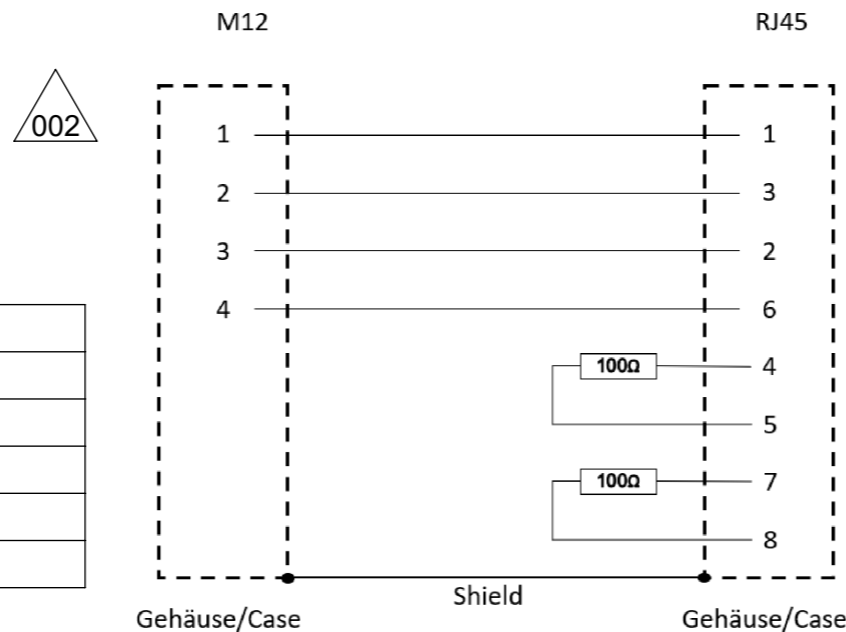


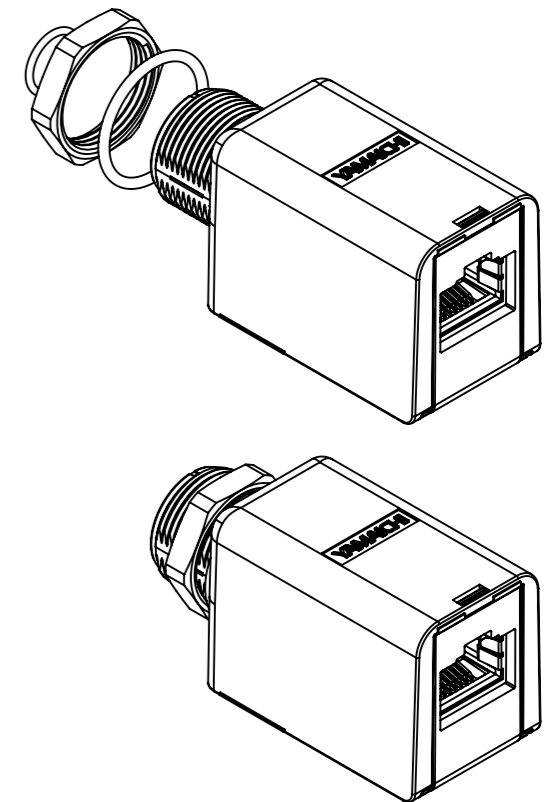
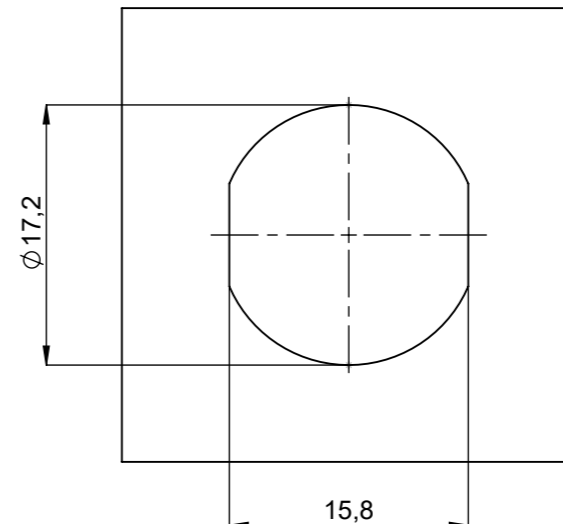
Mating Face acc. to DIN IEC 61076-2-101 &
DIN IEC 61076-2-012 (For Push-Pull Lock)



Wiring Diagram



Recommended Panel Cut-Out



Material:

Part	Material / Plating
Shell	Zinc Alloy - Nickel Plated
M12 housing	Glass Fibre - Reinforced TPU
M12 Contacts	Copper Alloy - Gold Plated
Sealing Rings	NBR
RJ45 Contacts	Copper Beryllium - Gold Plated

Notes:

1.1. Degree of Protection: RJ45 Side: IP20
M12 Side: IP67 when mated

1.2. Operating Temperature: -40°C to +80°C

1.3. EMI Shielding: 10 kV

1.4. Max. Panel Thickness: 5 mm

Yamaichi acts with all markings of the product exclusively on behalf of the customer as service provider and not as distributor. Yamaichi is not aware of the customer's end use/application. The customer indemnifies Yamaichi from any liability towards third parties in connection with the marking - with the exception of the legal exclusions of liability according to § 309 No. 7 BGB.

100% Critical Dimensions to be inspected 100%.

Critical Dimensions.

<SPC> Critical Dimensions. To determine Cmk & Cpk.

UNLESS OTHERWISE SPECIFIED :
DIMENSIONS ARE IN MILLIMETERS

TOLERANCES:
ISO 2768-1 m
ISO 2768-2 K

ORDER / ARTICLE NO. 82-00862

ANGLE PROJECTION: FIRST

WEIGHT: 82.96

100% Critical Dimensions to be inspected 100%.

Critical Dimensions.

Critical Dimensions. To determine Cmk & Cpk.

UNLESS OTHERWISE SPECIFIED :
DIMENSIONS ARE IN MILLIMETERS

TOLERANCES:
ISO 2768-1 m
ISO 2768-2 K

ORDER / ARTICLE NO. 82-00862

ANGLE PROJECTION: FIRST

WEIGHT: 82.96

CONFIDENTIAL

RoHS compliant acc. to directive 2011/65/EU

The information contained in this drawing is the sole property of YAMAICHI ELECTRONICS DEUTSCHLAND GMBH. Any reproduction in part or whole without the written permission of YAMAICHI ELECTRONICS DEUTSCHLAND GMBH is prohibited.

REVISION	DESCRIPTION	ID	REV.	DATE
002	Assembly update	T059	16.02.2023	

DO NOT SCALE DRAWING

CREATED	MODIFIED	RELEASED
T059 28.09.2020	T140 06.10.2023	T059 06.10.2023

SUBREV:01

Customer Drawing

Specification/Drawing subject to alteration without prior notice.

The information contained in this drawing is the sole property of YAMAICHI ELECTRONICS DEUTSCHLAND GMBH. Any reproduction in part or whole without the written permission of YAMAICHI ELECTRONICS DEUTSCHLAND GMBH is prohibited.

YAMAICHI ELECTRONICS

002 Assembly update T059 16.02.2023

Description: Coupler for el. cabinets RJ45 (IP20) to M12 D4 (IP67)

Purchase No.: Y-CONCOUPL-RJ45M12D4-180Y

Drawing No.: Customer-P3647A1702

REVISION: 002

SCALE: 2:1 SHEET 1 OF 1 DIN A3 - ASSEMBLY