

YED254 / YED274 MOUNTING INSTRUCTION

This mounting instruction provides recommendations for mounting a YAMAICHI Test Contactor (socket) YED254 / YED274. The socket must be handled with care when mounting or removing to/from the PCB to avoid damaging the sensitive contact pins.

Preparation before Mounting

Use only mounting material supplied with sockets by Yamaichi Electronics Dtl. GmbH.

If mounting material is lost, please contact Yamaichi Electronics Dtl. GmbH.

Make sure socket surfaces are clean: No dust, lint or other substances. Also PCB surfaces must be clean from flux or other residues due to PCB manufacturing and assembly process (see PCB washing example procedure).

Use state of the art gloves for electronics assembly.

PCB washing example procedure:

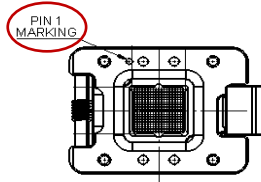
Washing after component assembly but before socket mounting  
 System: Kolb PSB500H70 SoftDry  
 Detergent: MultiEx VR-SP  
 Washing: 3x 4min @25°C  
 Flushing: 35min @ 25°C  
 Drying: 65min @ 60°C

**Do not touch contact pins at all.**

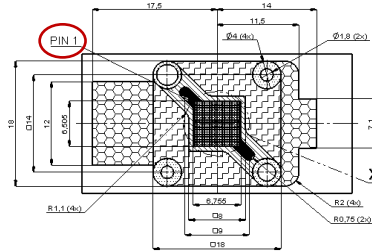
Socket Orientation

Make sure, that socket is orientated correctly:

Socket Pin1 / A1 marking must be in line with PCB Pin1 / A1 marking.



Socket top view, cover hidden



PCB layout socket side

Mounting Sockets

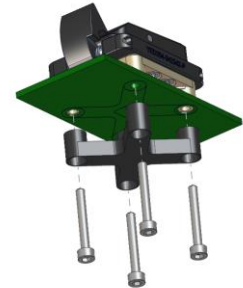
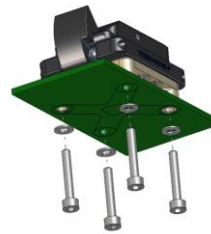
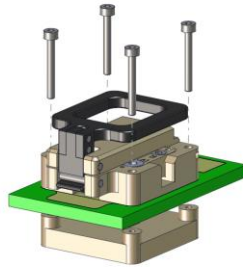
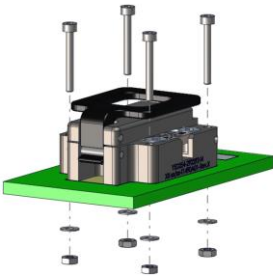
The YED254, YED274 and Y-RED sockets are available in different mounting versions. Please refer to socket drawing about your socket type.

Socket with screws, washers and nuts (no stiffener):

Socket with Stiffener (thread in stiffener)

Thread in Lid Base (Screw and Washer)

Thread in Lid Base with Stiffener



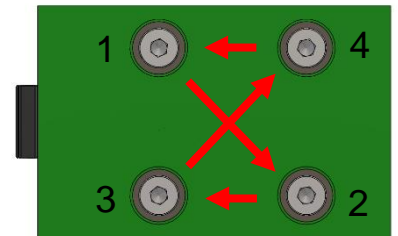
**Warning:** During tightening, make sure the socket is pressed constantly against PCB – seating parallel and no air gap between socket and PCB!

Tighten screws (or nuts) cross wise as shown in the figure mounting sequence with steady force by hand.

**Warning:** Never tighten one screw completely before other screws are at least tighten by hand! Repeat tightening cross wise as shown in the figure mounting sequence by using a torque driver.

For correct torque, please refer to table below.

**Warning:** All screws have to be used for mounting!



Mounting sequence

Mounting Torques (Nm) for Stainless steel screws

Material	Aluminum (AlZn5Cu3Mg)	Stainless Steel (1.4301)	Plastic (PEEK)
Screw Ø			
M1.6	0,13	0,16	0,09
M2	0,16	0,20	0,12

The mounting instructions need to be followed for proper performance of the socket. If not followed, the user is solely responsible for the socket's performance and damage.